

Structural Materials Laboratory

Research:

- Spine biomechanics
- Structural materials
- Piezoelectric materials
- Biomaterials characterization
- Medical device testing

Collaborating Faculty:

Vijay Goel, Ph.D. (UT)

Jim Smay, Ph.D. (OSU)

Sara Wilson, Ph.D. , Ron Barrett, Ph.D. , and Paulette Spencer, D.D.S., Ph.D. (KU)



Equipment:

MTS MiniBionix; MTS Spine Simulator; MTI Noncontact Displacement Transducers

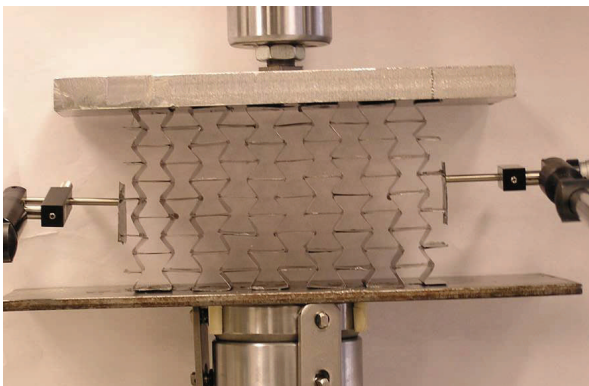
Funding Sources:

Industry contracts

NIH SBIR Phase I and Phase II

NSF CMMI

NSF Research Experience for Teachers

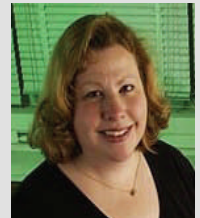


Director:

Elizabeth A. Friis, Ph.D.

(Wichita State, 1994)

Associate Professor,
Mechanical Engineering



lfriis@ku.edu

Courses:

Biomaterials

Biomedical Produce Design and Testing

Go to www.bio.engr.ku.edu to learn more.