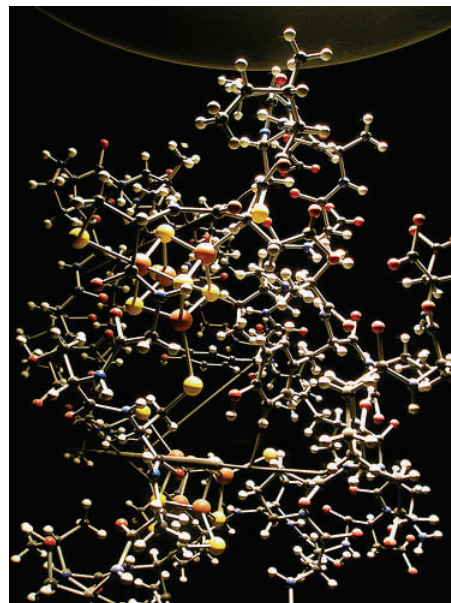


Information & Telecommunication Technology Center - Bioinformatics

Research:

- Machine learning/data mining
- Bioinformatics
- Systems Biology
- Cancer Biology



Collaborating Faculty:

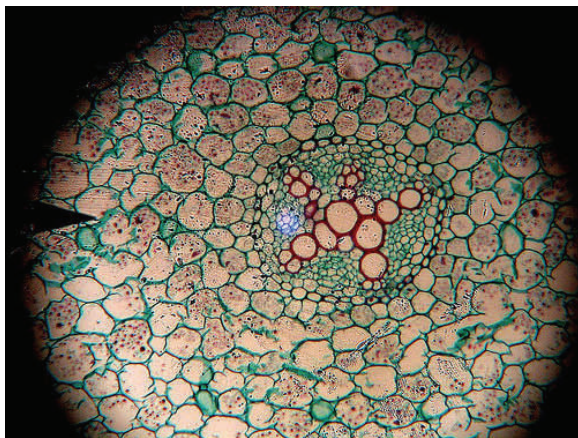
Molecular Biological Science, Chemistry, Medical School, Pharmacology and Toxicology, Higuchi Bioscience Center

Equipment/Software:

Artificial Intelligence Development and Data Mining Tools (Lisp, CLOS etc.);
Computational Clusters (total of 384 processes); 37 TB of on-line storage;
Bioinformatics software: ClustalW,
Emboss GENSCAN, HMMER, etc.

Funding Sources:

NSF, NIH, DOD



Director:

Xue-Wen Chen, Ph.D.

(Carnegie Mellon, 2001)

Associate Professor,
Electrical Engineering and
Computer Science



xwchen@eecs.ku.edu

Courses:

Machine Learning

Protein Bioinformatics

Machine Learning with Life Sciences

Applications

Go to www.bio.engr.ku.edu to learn more.